

Welcome to Bents Green School.



Open Event



Bents Green School has three sites

- Ringinglow Site – currently for Y7-Y9
- Gleadless Site – currently for Y10-14
- Westfield Hub – Y8-Y11





Co-Head of School
Aileen Hosty



Co-Head of School
Laura Rzepinski



Ringinglow SLT



Elena Drayson



Richard Cusworth



Cathy Varley

Gleadless SLT



Marie Old



Adrian Symonds





What to expect at Bents Green School



Our values, which help to deliver our ethos are:

- We are kind
- We are safe
- We are hardworking



In November 2021 we were the first school in Sheffield to be awarded the TISUK Trauma and Mental Health Informed School Award

**TRAUMATM
INFORMED UK
SCHOOLS**

TISUK Award winning school



We are a Trauma Informed School because.....

PROTECT

- A key focus on importance of **safety** for staff and students.
- TEAM TEACH School.
- Supportive Touch.
- Care, praise & rewards.
- High expectations, rules and boundaries.
- Calm Rooms & Safe spaces.
- Reducing stress in crisis.

RELATE

- Emotionally Available Adults
- Staff - Student relationships
- TT10, Mighty Minds,
- 'Protecting attachments'
- PACE approaches embedded
- Home school communication.
- Change of face

REGULATE

- Team Teach (Listening)
- Sensory Circuits
- Calm Rooms
- Access to Nature
- Interventions (all)
- Curriculum / PSHE / Forest Schools
- Emotional literacy
- Sensory Tools
- Supportive holding
- PACE

REFLECT

- Review, Reflect & Repair.
- Reflection Time
- Empathetic listening
- Sand Play
- Social Stories
- Rewards systems
- Social Scripts
- PSHE & Circle Time
- Time Out
- Sequencing

The School Day in September 2023

- The school day is 09:00-15:30
- Each class has a minimum of 40 mins playtime each day
- Each class has 10 minutes of reading for leisure each day
- Each class has access to structured phonics lessons each day
- Each class has an intervention session per day



The Curriculum Pathways

Pathway 1

Formal Curriculum

Outcomes may include a few GCSEs and other Entry 2/3 Level qualifications

Pathway 2

Formal Curriculum with increased focus on Life Skills

Outcomes include Entry 2/3 Level Qualifications

Pathway 3

Semi-Formal Curriculum

Outcomes include Entry 1/2 Level Qualifications

Pathway 4

Semi-Formal Curriculum

Outcomes include EQUALS Qualification



	Main Meal	Vegetarian	Salad Bar	Pudding
Monday	Baked Ham, Cauliflower Cheese & New Potatoes	Quorn, Cauliflower Cheese & New Potatoes	Jacket Potato Beans/ Cheese/ Tuna/ Ham/ Flan /Salad/Wedges Plain Pasta/Tomato Pasta Bake	Rice Crispy Crunch
Tuesday	Sweet Chilli Chicken & Rice	Sweet Chilli Quorn & Rice	Jacket Potato Beans/ Cheese/ Tuna/ Ham/ Flan /Salad/Wedges Plain Pasta/Tomato Pasta Bake	Arctic Roll
Wednesday	Homemade Meatballs & Pasta	Quorn Meatballs & Pasta	Jacket Potato Beans/ Cheese/ Tuna/ Ham/ Flan /Salad/Wedges Plain Pasta/Tomato Pasta Bake	Chocolate Cake & Fresh Cream
Thursday	Plate Mince Meat Pie, Potato Wedges, Mixed Veg & Gravy	Quorn Pie, Potato Wedges, Mixed Veg & Gravy	Jacket Potato Beans/ Cheese/ Tuna/ Ham/ Flan /Salad/Wedges Plain Pasta/Tomato Pasta Bake	Syrup Sponge & Custard
Friday	Burger, Chips & Spaghetti Hoops	Quorn Burger, Chips & Spaghetti Hoops	Jacket Potato Beans/ Cheese/ Tuna/ Ham/ Flan /Salad/Wedges Plain Pasta/Tomato Pasta Bake	Gingerbread Men



INDIVIDUALS
MATTER



Attendance

- We have a full time Learning Mentor who will work closely with students and families where needed
- All students at BGS should aim to have excellent attendance – at least 95%
- Term Time leave will only be authorised in exceptional circumstances.
- Holidays taken during term time will result in a fine (in line with Sheffield City Council policy)



Behaviour

- All staff are trained in Team Teach De-escalation strategies
- Work in partnership with families and other professionals
- Engagement
- Logical consequences
- Focus on early intervention and development of relationships.



- Individual Support Plans



Celebration

At Bents Green School we will celebrate pupils for:

- Following school values
- Being polite, respectful and having appropriate manners.
- Taking pride in their work





Safeguarding

- Your child's safety and happiness is our priority
- We have a dedicated safeguarding and wellbeing team who will support students and families with safeguarding, health and wellbeing, attendance and behaviour issues and concerns
- All staff are trained to identify signs and indicators of abuse and exploitation
- We offer additional support to parents who may be struggling due to domestic issues, bereavement, illness , financial issues etc
- We offer a wide range of personalised interventions to support students mental health , wellbeing and behaviour

Uniform

- We want all students to identify as being part of our school community.
- All students will be expected to wear at least **1 item** of clothing with the BGS Logo. (T- Shirt, Polo Shirt or a jumper.)
- Clothing needs to be appropriate for the weather and curriculum.
- 1 simple stud earring and a watch.
- No make up
- www.pindersschoolwear.com



Transition

- Currently finishing visits to primary schools
- After that students will be placed into groups

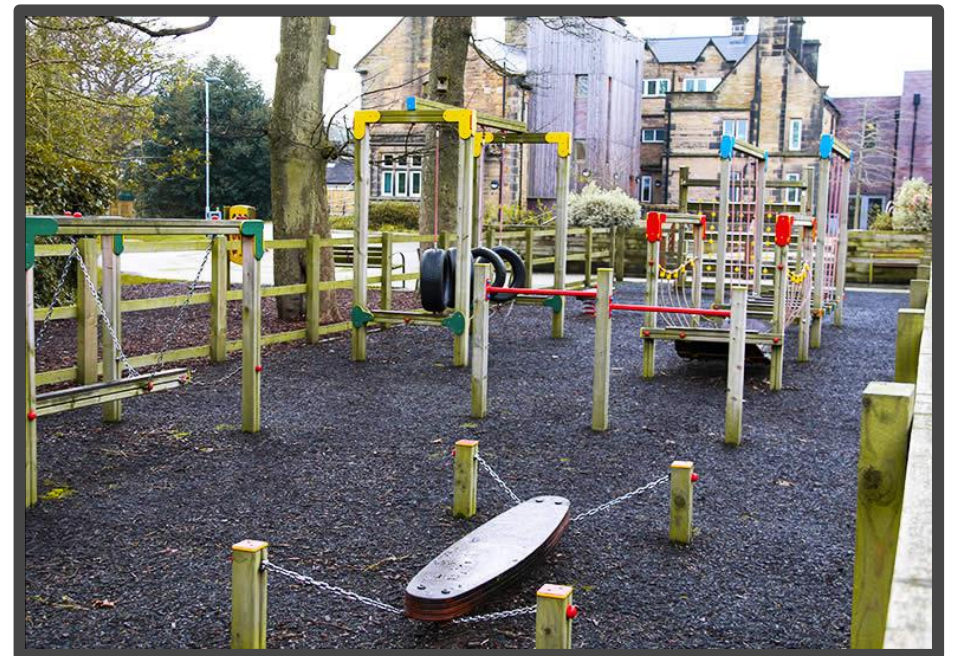
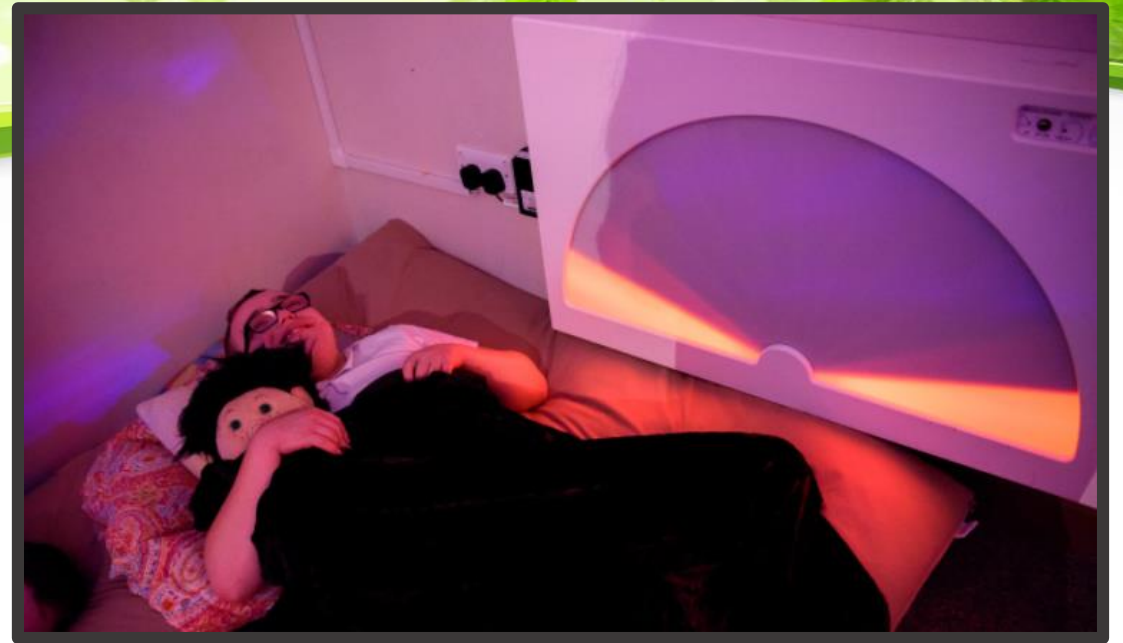
	Class 1	Class 2	Class 3	Class 4
Visit 1 Tour with parents 10-10.30am	Monday 12 th June	Wednesday 14 th June	Thursday 15 th June	Friday 16 th June
Visit 2 Visit with school 10am – 12am	Monday 26 th June	Tuesday 27 th June	Thursday 29 th June	Friday 30 th June
Visit 3 Visit with school 10am-2pm	Monday 3 rd July	Tuesday 4 th July	Wednesday 5 th July	Thursday 6 th July



Transition

Parent/Carer Coffee Morning

Monday 17th July





Any questions?

